

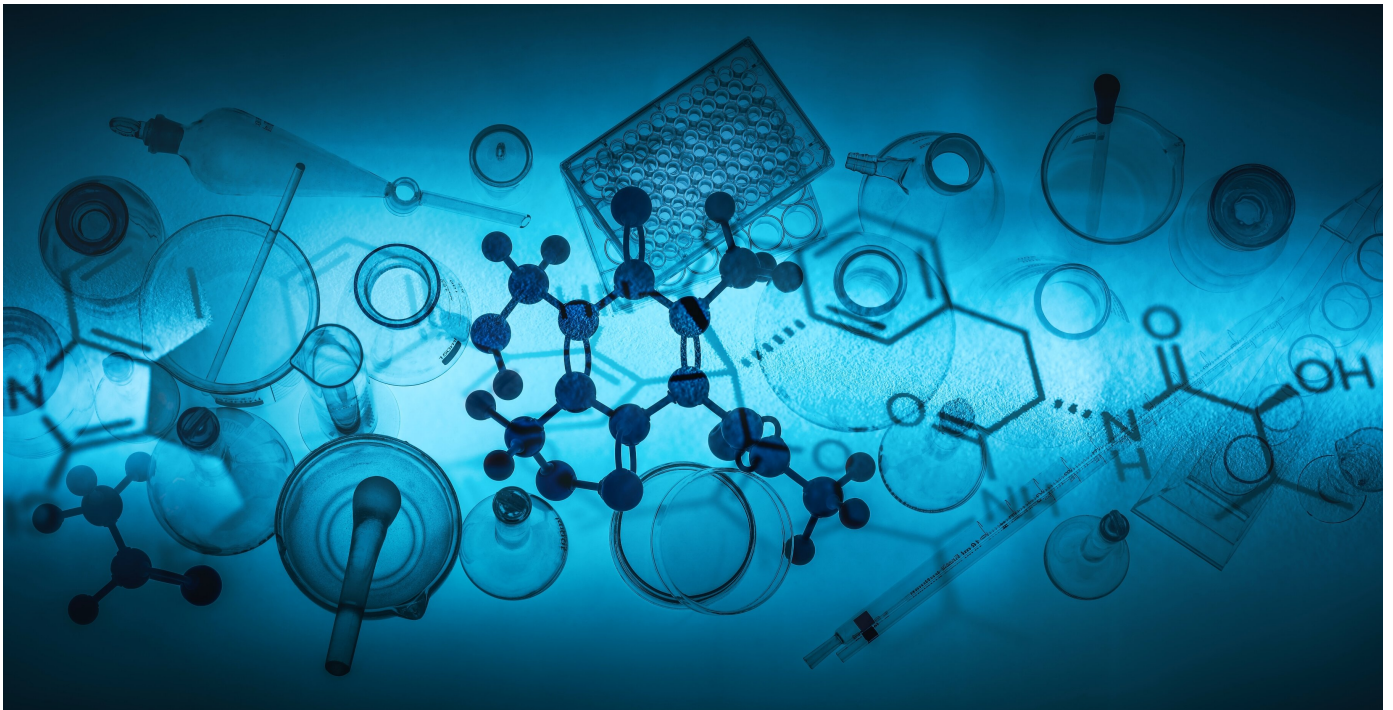
WEEK OF 11TH - 17TH NOVEMBER



# THE CHURCH OF THE NATIVITY

## OUR MISSION IS TO:

- DRAW people to faith in Christ
- GROW people in their commitment to Christ
- REACH OUT beyond ourselves with the love of Christ



## OUR SERVICES TODAY

<b>THEME:</b>	Science and Christianity: Friend or Foe?
<b>PREACHER:</b>	Rev. Kaye Dyer
<b>READINGS:</b>	<i>Psalm 19:1-6 &amp; John 18:33-37</i>
<b>SENTENCE:</b>	When the Spirit of truth, comes, he will guide you into all the truth. <i>John 16:13</i>
<b>COLLECT:</b>	Majestic God, ruler of all creation, your kingdom is not of this world. Christ revealed a new truth. Raise up truth in our lives, that as your people we may see your glory, sing your praises, and live a new way. Through Jesus Christ our Liberator, who is alive and reigns with you, in the unity of the Holy Spirit, one God, now and forever. Amen

# Welcome

NOTES/ART

## PARISH PRAYER POINTS

Please pray for:

- The hospital, our rest home chaplaincy, schools, and others as they negotiate restrictions and changes due to COVID.
- Our senior students as they prepare for and sit exams.



## PRAYER REQUESTS

Please remember to add your prayer requests to the box in the foyer. A pen and paper are provided. These will be collected each week to be prayed over.

**Jane Sheat** (578 9004) and **Rosemarie Nicholls** (578 1163) are our Prayer Chain Coordinators. Please contact the office or phone them with any requests you have for the prayer chain during the week.

# NEWS AND EVENTS

## THANK YOU

Thank you to everyone who gave food and supported the Ni-Van RSE workers when their travel plans were disrupted recently and they were self-isolating. They were all very grateful for the support and some of them have now been able to go home. Please keep them and Jean Rooney (in her pastoral care role) in your prayer as this process continues.

## SHARING CHRISTMAS

Do you have room at your table for an extra one or two people for Christmas Day? Are you on your own or have nowhere to go on Christmas Day? Ring or email me and I will connect you. Phone 0211799698 or email: [gail.pickett@xtra.co.nz](mailto:gail.pickett@xtra.co.nz)

## PEOPLE AND CHANGES IN OUR DIOCECAN WHĀNAU

On Saturday 20th November we have eight people being ordained as priests/presbyters at the Nelson Cathedral:

- **Stephen Gully** (Hospital Chaplain)
- **Joseph & Alice Kinyua** (St. Stephen's Tahunanui)
- **Paul Milson** (Brightwater)
- **John Phillips** (Awatere Joint Venture)
- **Gordon Taylor** (All Saints Nelson)
- **Marie-Jeanette van der Wal** (Picton)
- **Deolito Vistar** (St Christopher's)

Because of Alert Level 2 restrictions, we cannot offer an open invitation to everyone. The limited seating will be assigned to family of the candidates, parish representatives, and clergy representatives.

We would love you to join us via the [live stream](#). Please take the opportunity to pray for the candidates as they prepare for the ordination.

## CREATIVES AND LOVERS OF ALL THINGS CHRISTMAS!



Advent starts next Sunday! If you are keen on decorating and Christmas decorations will be available after the service next week (28th) for inspiration.

## FOODBANK APPEAL

This year's Foodbank Street Appeal is on **Monday 22nd November**. Any non-perishable food items will be greatly received particularly:

- staples like rice, flour, pasta, soup packets
- tinned food, like spaghetti and fruit
- baby food, or items good for kids lunch boxes, cereal, powdered milk, and Christmas items

## AAW MEETING

The December AAW meeting will be held in the Nativity Lounge on the afternoon of the **1st of December** in conjunction with St Christopher's. More information to come. All women welcome!

## STAMP FUNDRAISING

From 2022 Anglican Missions will discontinue stamp collecting. For decades, many of you have kindly and diligently collected and trimmed stamps or even sent stamp albums. Thank-you to Laraine Nicholas who has done much trimming and sorting over many years. The revenue from stamps over the years has been used to improve the lives of countless people across the globe. If you do have some (non-kiwi) stamps at home please bring them in the next few weeks so that Margaret can get them to Wellington before the cut-off. For more information see the notice in the hallway.

## COMING UP:

### NOVEMBER

Thursdays

**Healing  
Horticulture**  
7pm - Barnies

Fridays

**Link**  
1pm - Lounge

**Tunes for Tots**  
9:30am - Hall

Monday 22nd

**Care and Share**  
9:30 - Hall

### CHRISTMAS SERVICES

Sunday 19th

**Nine lessons and carols**  
7pm - Church

Friday 24th  
*Christmas Eve*

**Family Communion**  
10pm - Church

Saturday 25th  
*Christmas Day*

**Sung Eucharist Service**  
8am - Church  
**Family Communion**  
10am - Church

Sunday 26th  
*1st Sunday of  
Christmas*

**Eucharist Service**  
9am - Church

## CONTACT US



Monday - Wednesday 9am - 1pm  
Thursday - Friday 9am - 12noon



76 Alfred Street Blenheim 7201



578 3909



info@nativity.org.nz



www.nativity.org.nz



NativityChurchBlenheim

**Nativity Bank Account**

ANZ 060705 0429077 00

## WEEKLY SERVICES

Sundays 8am

**Sung Eucharist Service**  
Church

Sundays 10am

**Family Communion**  
Church

Thursday 10am

**Eucharist Service**  
St Barnabas Chapel  
(Barnies)

## NATIVITY CONTACT DETAILS

**Vicar:**

**Rev. Glen Ashworth**  
vicar@nativity.org.nz

**Parish Nurse:**

**Sharon Thomas**  
parishnurse@nativity.org.nz  
022 104 0540

**Receptionist:**

**Rosalind Mundy**  
Mon - Wed & Friday 9am-2:30pm

**Parish**

**Kathy Taylor**

**Administrator:** Tues - Thurs 9am-2:30pm

*All can also be contacted via the office  
(please see details above)*

**NEXT SUNDAY**

**Rev.  
Glen Ashworth**

**"The saints go  
marching in!"**